



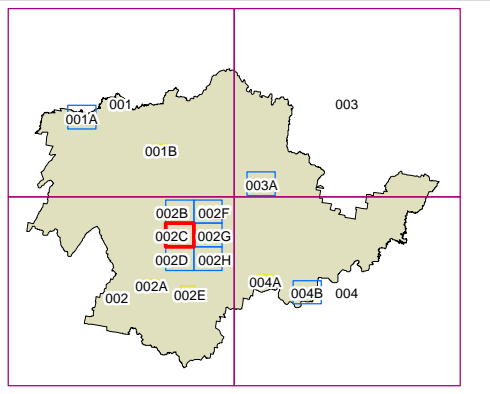
Cowra Local Environmental Plan 2012

Land Zoning Map - Sheet LZN_002C

- Land Zoning**
- B1 Neighbourhood Centre
 - B2 Local Centre
 - B5 Business Development
 - B7 Business Park
 - E1 National Parks and Nature Reserves
 - E2 Environmental Conservation
 - E3 Environmental Management
 - IN1 General Industrial
 - IN2 Light Industrial
 - R1 General Residential
 - R5 Large Lot Residential
 - RE1 Public Recreation
 - RE2 Private Recreation
 - RU1 Primary Production
 - RU3 Forestry
 - RU4 Primary Production Small Lots
 - RU5 Village
 - SP2 Infrastructure
 - SP3 Tourist
 - W2 Recreational Waterways

Cadastre
Cadastre 26/01/2011 © Land and Property Information (LPI)

DRAFT LEP MAP



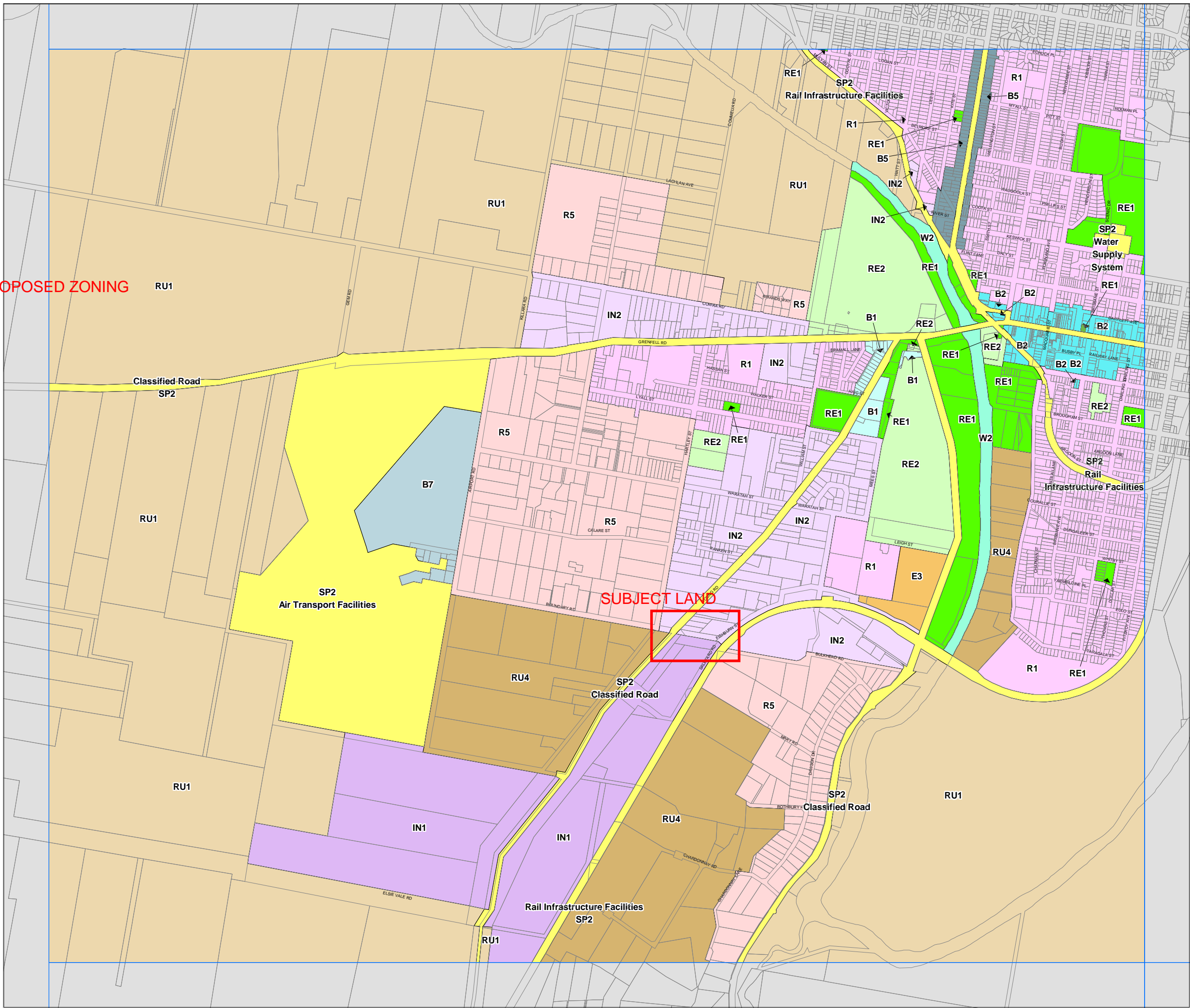
0 400 800 metres

Scale: 1:20,000 @ A3

Projection: GDA 1994
MGA Zone 55

Map Identification Number:

2350_COM_LZN_002C_020_20120401





Cowra Local Environmental Plan 2012

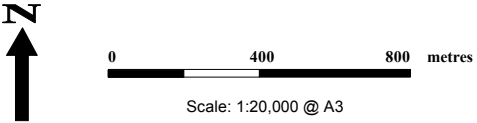
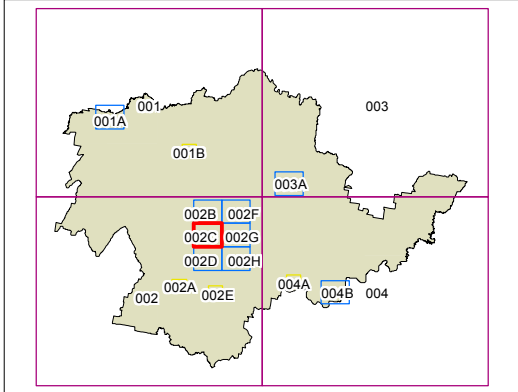
Land Zoning Map - Sheet LZN_002C

- Land Zoning**
- B1 Neighbourhood Centre
 - B2 Local Centre
 - B5 Business Development
 - B7 Business Park
 - E1 National Parks and Nature Reserves
 - E2 Environmental Conservation
 - E3 Environmental Management
 - IN1 General Industrial
 - IN2 Light Industrial
 - R1 General Residential
 - R5 Large Lot Residential
 - RE1 Public Recreation
 - RE2 Private Recreation
 - RU1 Primary Production
 - RU3 Forestry
 - RU4 Primary Production Small Lots
 - RU5 Village
 - SP2 Infrastructure
 - SP3 Tourist
 - W2 Recreational Waterways

Cadastre

Cadastre 26/01/2011 © Land and Property Information (LPI)

GAZETTED LEP MAP



Projection: GDA 1994
MGA Zone 55

Map Identification Number:
2350_COM_LZN_002C_020_20121116

